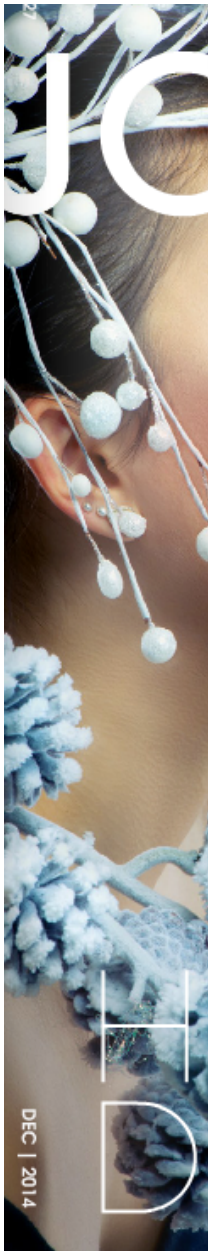


THE PREMIER REAL ESTATE AND LIFESTYLE MAGAZINE DC | VA | MD

JOHNERIC HOME

DESIGNER SPOTLIGHT



DEC | 2014



Kelley Proxmire

Kelley Proxmire has held a lifelong passion for interior design. In her pre-teen years she was fascinated by the transformation worked on the room by an interior

designer. "I would sit for hours," recalls Proxmire, "studying the fabric mix, the scale of the furniture, the interplay of color. When everyone else bought Seventeen, I was buying House Beautiful." She went on to immerse herself in the rooms of classic design greats such as Billy Baldwin, Mark Hampton, Frances Elkins, and Michael Taylor. These influences laid the foundation for a style defined by what is beautiful and enduring. Proxmire holds a prolific career in design spanning 21 years. She has participated in 21 show houses since 2001. This designer has garnered repeated national coverage for her contributions to the Washington Design Center's Design Houses, as well as those benefiting local charities such as Women's Committee of the National Symphony Orchestra. She was selected as a designer for the DC Design House benefiting Children's National Medical

Center in 2010 and 2012. These projects, as well as residential projects throughout the Eastern Seaboard, have been showcased in publications such as Traditional Home, Washingtonian, Home & Design, Bethesda, The Washington Post, and The Georgetown. Proxmire was inducted into the Washington Design Center Hall of Fame in 2009. Throughout her career, Proxmire has developed a matchless eye for crafting what she describes as "tailored traditional" interiors. Her projects suffuse warmth and hospitality while maintaining excellent balance, proportion and scale. Her love of color is combined with an appreciation for the fresh sophistication of white and the daring elegance of black. Adept at mixing traditional pieces with unexpected finds, Proxmire creates environments that are attuned to the client's world and faithful to the architecture and setting of a home.

Kelley Proxmire